

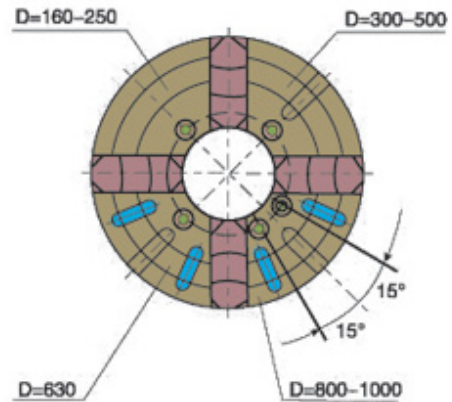


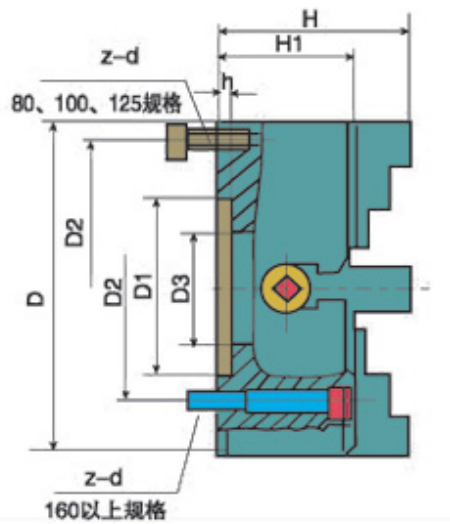
Application

Recommended for the processing of non-ferrous metals, non-metals like plastics.

Features

- 1.High precision short cylindrical center mounting.
- 2.Flimsy parts are specifically engineered by quenching, for greater durability and extended life.
- 3.Adjusted independently to center, suitable for processing special shaped with superior gripping force.





Application

Recommended for processing of processing of non-ferrous metals, non-metals like plastics and so on.

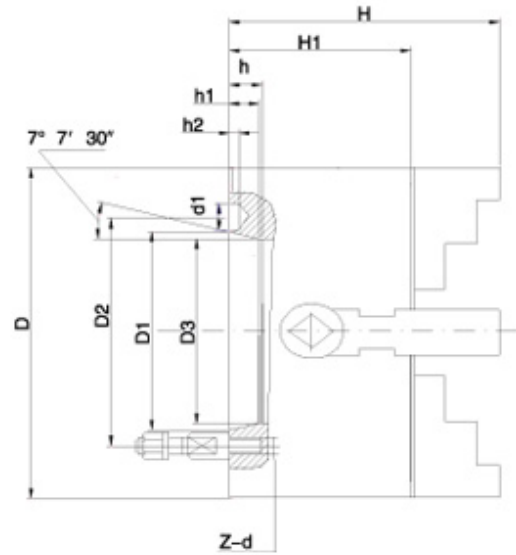
Features

1. High precision short cylindrical center mounting .
2. Flimsy parts are specifically engineered by quenching, for greater durability and extended life.
3. Adjusted independently to center, suitable for processing special with superior gripping force.

Dimension parameters

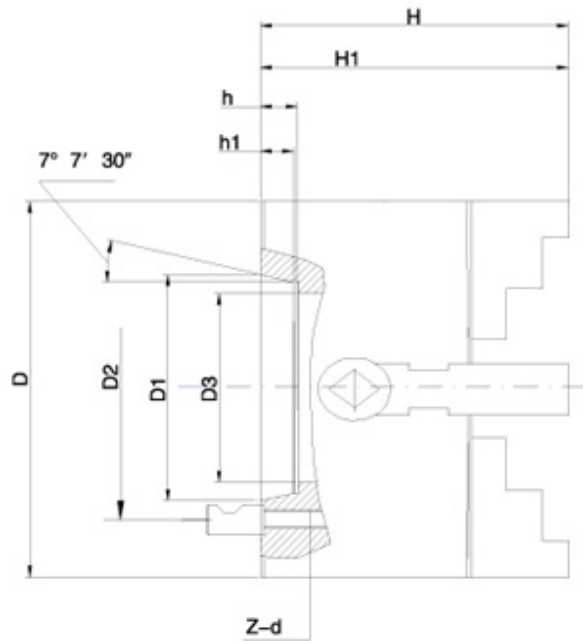
Size	D1	D2	D3	H	H1	h	z-d	Max.input torque	Max.speed r/min
80	55	66	22	56	42	3.5	4-M6	25	4000
100	72	84	25	54	54	3.5	4-M8	30	3500
125	95	108	30	78	56	4.5	4-M8	50	3000
160	65	95	45	93	75	5	4-M10	70	2500
200	80	112	56	107	80	6	4-M10	100	2000
250	110	130	75	120	90	6	4-M12	150	1600
300	152	130	75	134	90	6	4-M12	180	1200
320	140	165	95	134	90	6	4-M16	200	1200
350	130	168	95	134	90	6	4-M16	250	1200
400	160	185	125	143	95	8	4-M16	280	1000
450	180	205	140	147	100	8	4-M16	300	900
500	200	236	160	161	106	8	4-M20	350	800
630	220	258	180	180	118	10	4-M20	400	600
800	250	300	210	202	132	12	4-M20	500	500
1000	320	370	260	230	150	15	4-M20	600	400

Two-piece jaw sets on request top jaws with tongue groove conforming to ISO3442



Form C: mounting with studs and locknuts

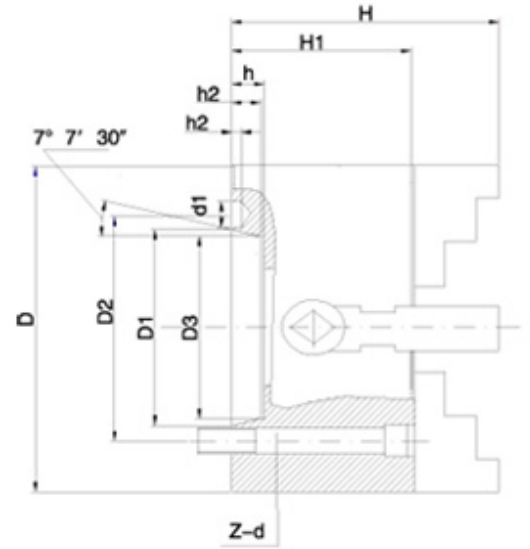
Size	Short taper NO.	D1	D2	D3	H	H1	h	h1	h2	d1	z-d
160	3	53.975	75.0	45	93	65	13	10	-	-	3-M10
200	3	53.975	75.0	51	107	75	-	10	-	-	3-M10
200	4	63.513	85.0	56	107	75	13	10	6.5	14.7	3-M10
250	4	63.513	85.0	61	120	80	-	10	6.5	14.7	3-M10
320 350	4	63.513	85.0	61	120	80	-	10	6.5	14.7	3-M10
200	5	82.563	104.8	56	107	75	15	12	6.5	16.3	4-M10
250	5	82.563	104.8	75	120	80	15	12	6.5	16.3	4-M10
320 350	5	82.563	104.8	79	134	90	-	12	6.5	16.3	4-M10
400	5	82.563	104.8	79	143	95	-	12	6.5	16.3	4-M10
200	6	106.375	133.4	56	107	75	16	13	6.5	19.5	4-M12
250	6	106.375	133.4	75	120	80	16	13	6.5	19.5	4-M12
320 350	6	106.375	133.4	95	134	90	16	13	6.5	19.5	4-M12
400	6	106.375	133.4	95	143	95	16	13	6.5	19.5	4-M12
500	6	106.375	133.4	103	161	106	-	13	6.5	19.5	4-M12
250	8	139.719	171.4	75	120	80	18	14	8.0	24.2	4-M16
320 350	8	139.719	171.4	95	134	90	18	14	8.0	24.2	4-M16
400	8	139.719	171.4	125	143	95	18	14	8.0	24.2	4-M16
500	8	139.719	171.4	136	161	106	-	14	8.0	24.2	4-M16
320 350	11	196.869	235.0	95	134	90	20	16	10.0	29.4	6-M20
400	11	196.869	235.0	125	143	95	20	16	10.0	29.4	6-M20
500	11	196.869	235.0	160	161	106	20	16	10.0	29.4	6-M20
500	15	285.775	330.2	160	161	106	21	17	10.0	35.7	6-M24



Form D:mounting with studs for camlocks

Size	Short taper NO.	D1	D2	D3	H	H1	h	h1	z-d
160	3	53.975	70.6	45	93	65	13	10	3-M10×1
200	3	53.975	70.6	51	107	75	-	10	3-M10×1
200	4	63.513	82.6	56	107	75	13	10	3-M10×1
250	4	63.513	82.6	61	120	80	-	10	3-010×1
320 350	4	63.513	82.6	61	134	90	-	10	3-M10×1
200	5	82.563	104.8	56	107	75	15	12	6-M12×1
250	5	82.563	104.8	75	120	80	15	12	6-M12×1
320 350	5	82.563	104.8	79	134	90	-	12	6-M12×1
400	5	82.563	1004.8	79	143	95	-	12	6-M12×1
250	6	106.375	133.4	75	120	80	16	13	6-M12×1.5
320 350	6	106.375	133.4	95	134	90	16	13	6-M16×1.5
400	6	106.375	133.4	95	143	95	16	13	6-M16×1.5
500	6	106.375	133.4	103	161	106	-	13	6-M16×1.5
320 350	8	139.719	171.4	95	134	90	18	14	6-M20×1.5
400	8	139.719	171.4	125	143	95	18	14	6-M20×1.5
500	8	139.715	171.4	136	161	106	-	14	6-M20×1.5
400	11	196.869	235.0	125	143	95	20	16	6-M22×1.5
500	11	196.869	235.0	160	161	106	20	16	6-M22×1.5
630	11	196.869	235.0	180	180	118	20	16	6-M22×1.5
500	15	285.775	330.2	160	161	106	21	17	6-M24×1.5
630	15	285.775	330.2	180	180	118	21	17	6-M24×1.5

Two-piece jaw sets on request top jaws with tonguegroove conforming to ISO3442.



K72 chucks can be directly mounted to the spindle noses of the machine tools in three ways A2、C and Dforms(The specification conform to GB/T5900.1-GB/T5900.3 (ISO0702)standard).

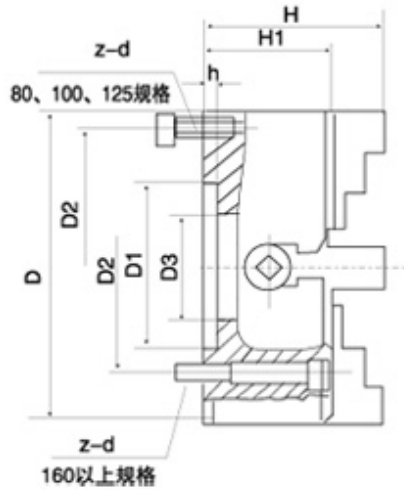
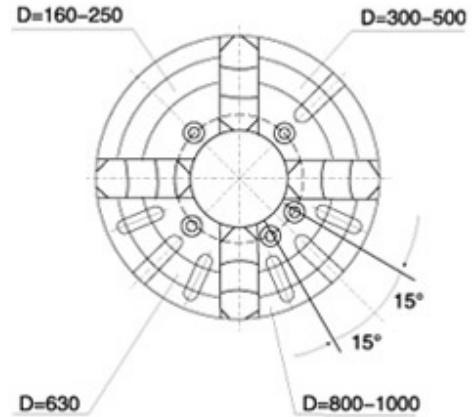
Independent and adjustable,suitable for machining all kinds of social-shaped workpieces.

Dimension characteristic parameters

Size	Short taper NO.	D1	D2	D3	H	H1	h	h1	h2	d1	z-d
160	4	63.513	82.6	45	93	65	13	10	6.5	14.7	4-M10
200	4	63.513	82.6	56	107	75	13	10	6.5	14.7	4-M10
250	4	63.513	82.6	61	120	80	-	10	6.5	14.7	4-M10
320 350	4	63.513	82.6	61	134	90	-	10	6.5	14.7	4-M10
200	5	82.563	104.8	56	107	75	15	12	6.5	16.3	4-M10
250	5	82.563	104.8	75	120	80	15	12	6.5	16.3	4-M10
320 350	5	82.563	104.8	79	134	90	-	12	6.5	16.3	4-M10
400	5	82.563	104.8	79	143	95	-	12	6.5	16.3	4-M10
200	6	106.375	133.4	56	107	75	16	13	6.5	19.5	4-M12
250	6	106.375	133.4	75	120	80	16	13	6.5	19.5	4-M12
320 350	6	106.375	133.4	95	134	90	16	13	6.5	19.5	4-M12
400	6	106.375	133.4	95	143	95	16	13	6.5	19.5	4-M12
500	6	106.375	133.4	103	107	106	-	13	6.5	19.5	4-M12
250	8	139.719	171.4	75	120	80	18	14	8.0	24.2	4-M16
320 350	8	139.719	171.4	95	134	90	18	14	8.0	24.2	4-M16
400	8	139.719	171.4	125	143	95	18	14	8.0	24.2	4-M16
500	8	139.719	171.4	136	161	106	18	14	8.0	24.2	4-M16
320 350	11	196.869	235.0	95	120	90	-	16	8.0	24.2	4-M16
400	11	196.869	235.0	125	134	95	20	16	10.0	29.4	4-M20
500	11	196.869	235.0	160	143	106	20	16	10.0	29.4	4-M20
630	11	196.869	235.0	180	161	118	20	16	10.0	29.4	4-M20
800	11	196.869	235.0	185	180	132	20	16	10.0	29.4	8-M20
500	15	285.775	330.2	160	202	106	20	17	10.0	35.7	4-M24
630	15	285.775	330.2	180	161	118	21	17	10.0	35.7	8-M24

800	15	285.775	330.2	210	202	132	21	17	10.0	35.7	8-M24
1000	15	285.775	330.2	280	230	150	21	17	10.0	35.7	8-M24
630	20	412.775	463.6	180	118	118	23	19	10.0	42.1	8-M24

Two-piece jaw sets on request top jaws with tonguegroove conforming to ISO3442.



Application

Recommended for the processing of non-ferrous metals, non-metals like plastics.

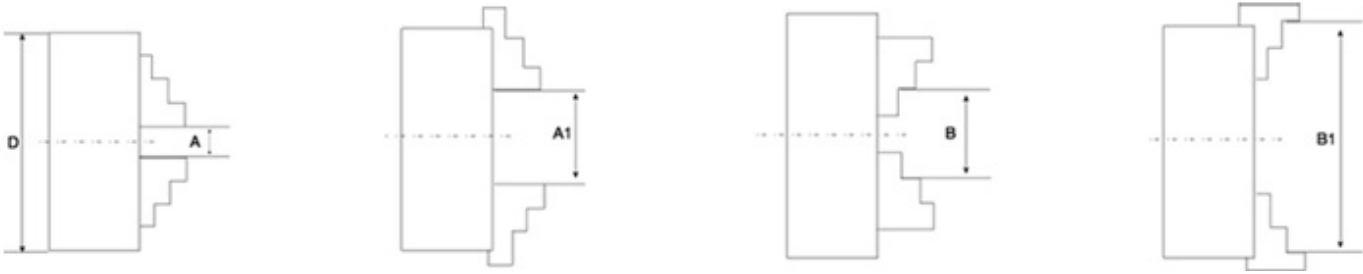
Features

- 1.High precision short cylindrical center mounting.
- 2.Flimsy parts are specifically engineered by quenching, for greater durability and extended life.
- 3.Adjusted independently to center, suitable for processing special shaped with superior gripping force.

Dimension characteristic parameters

Size	D1	D2	D3	H	H1	h	z-d	Max.input torque Nm	r/min Max.speed
80	55	66	22	56	42	3.5	4-M6	25	4000
100	72	84	25	54	54	3.5	4-M8	30	3500
125	95	108	30	78	56	4.5	4-M8	50	3000
160	65	95	45	93	75	5	4-M10	70	2500
200	80	112	56	107	80	6	4-M10	100	2000
250	110	130	75	120	90	6	4-M12	150	1600
300	152	130	75	134	90	6	4-M12	180	1200
320	140	165	95	134	90	6	4-M16	200	1200
350	130	168	95	134	90	6	4-M16	250	1200
400	160	485	125	143	95	8	4-M16	280	1000

450	180	205	140	147	100	8	4-M16	300	900
500	200	236	160	161	106	8	4-M20	350	800
630	220	258	180	180	118	10	4-M10	400	600
800	250	300	210	202	132	12	4-M20	500	500
1000	320	370	260	230	150	15	4-M20	600	400



Clamping range

Size	Internal jaw clamping range	External jaw clamping range
	A-A1	B-B1
80	5-35	35-80
100	6-45	40-100
125	7-57	48-125
160	8-80	50-160
200	10-100	63-200
250	15-130	80-250
300	20-156	100-300
315	20-170	100-315
320	20-176	100-320
350	20-206	100-350
400	25-250	118-400
450	30-280	120-450
500	35-300	125-630
630	50-400	160-630
800	70-540	200-800
1000	100-680	250-1000