



Application

Recommended for plate, rod components, machining all kinds of irregular workpieces and so on.

Features

1. This series chucks can be directly connected to the spindle noess of the machine tools, with nice rigidity and high accuracy.
2. Large through-hole, high rotation speed.
3. Matched with the soft jaws.

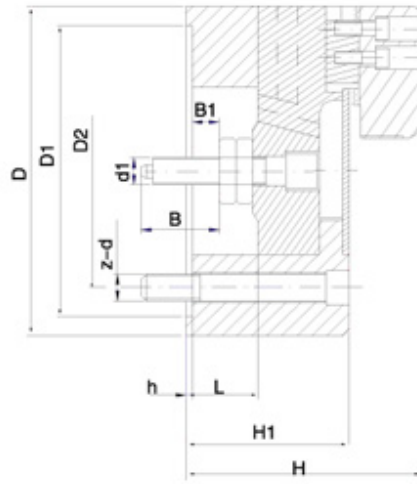
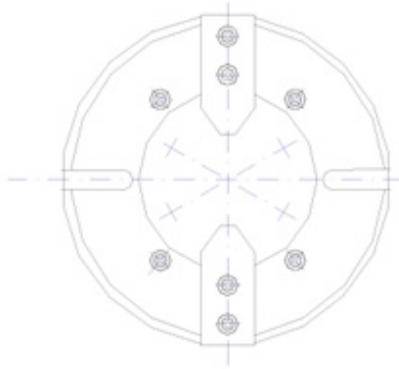


Short cylindrical center mounting.

Obtaining high gripping force and large jaw stroke by changing the lever ration.

Suitable for plate, rod components.

The jaws are connected by cross tenon.



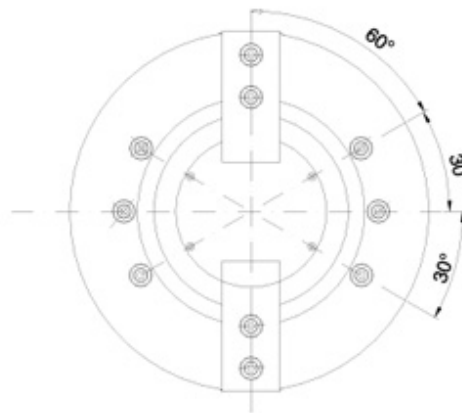
Dimension parameters

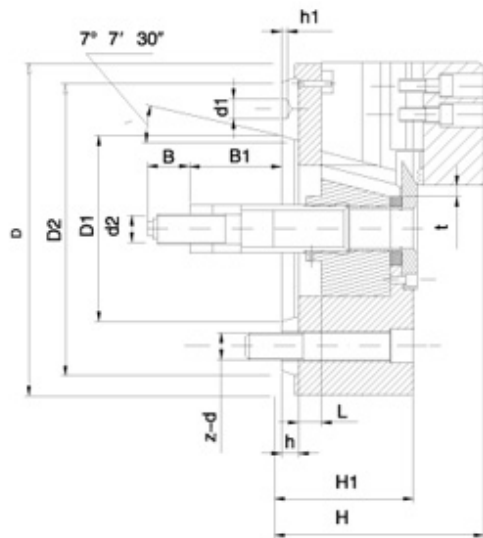
Size	D1	D2	d1	H1	H	h	B	B1	z-d2
160	130	110	M16	70	113	4	30	1	4-M12
200	165	130	M20	80	131	4	36	2	4-M14
250	210	171.4	M22	95	155	5	39	4	4-M16
320	270	235	M24	105	177	6	45	7	4-M16

Characteristic parameters

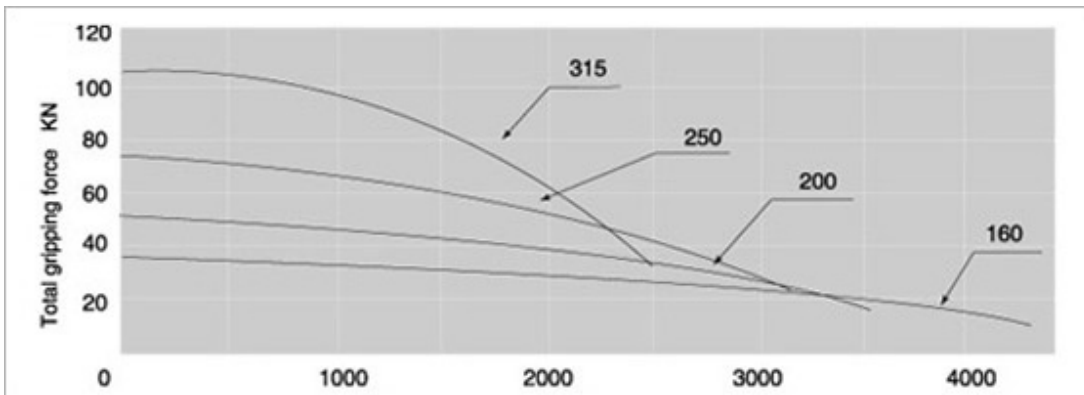
Size	XIAL WEDGE STROKE	Jaw stroke t(Dla.)	JMax.draw pull	Gripping force	Gripping force
160	19	10	7.5	20-16	35-160
200	23	12	12	20-200	35-200
250	27	14	22	30-250	45-250
320	30	16	30	35(50)-320	50(65)-320

Note: The() on the above table is for K50B chuck.





- This series chucks can be directly connected to the spindle noess of the machine tools, With nice rigidity and high accuracy.
- The chucks are suitable for machining all kinds of irregular workpieces.
- Matched with the soft jaws.



Dimension parameters

Size	D	D1	D2	H1	H	h	h1	B	B1	d1	d2	Z-d
160	165	82.563	104.8	84	123	15	6.5	36	86.5	16.3	M16	6-M10
200	210	106.375	133.4	97	138	17	6.5	36	110	19.5	M20	6-M12
250	254	139.719	171.4	102	148	18	8	36	140	24.2	M20	6-M16
315	315	196.869	235	125	179	20	10	48	145	29.4	M24	6-M20

Characteristic parameters

Size	Lmax Axial wedge stroke	Jaw stroke t (Dia.)	JMax.drawpull	Gripping force	r/min Jamming range	Jamming range	Gripping force	Rec.cylinder
160	20	8.5	14	35.7	4300	14-165	30-165	P22 125
200	21	8.8	19.5	51	3600	17-210	36-210	P22 160
250	25	8.8	28	73	3100	22-254	45-254	P22 160
315	30	10.6	41	106	2500	40-315	60-315	P22 200

125	10	5.4	10.8	24	7000	12-135	25-125	P25125
160	12	5.5	15	38	6000	14-169	30-169	P25125
200	18	7.6	23.2	57.3	5000	14-210	36-210	P25125
250	19	8.8	30	74	4200	31-254	45-254	P25160
315	23	10.6	38.8	96	3300	50-315	36-315	P25160